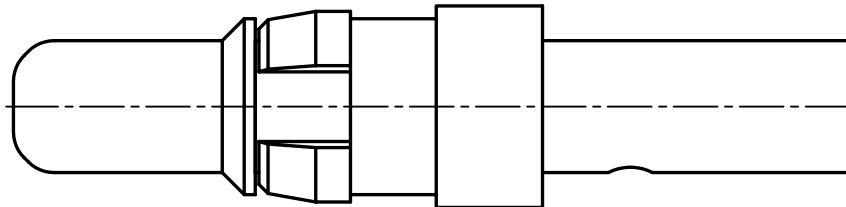
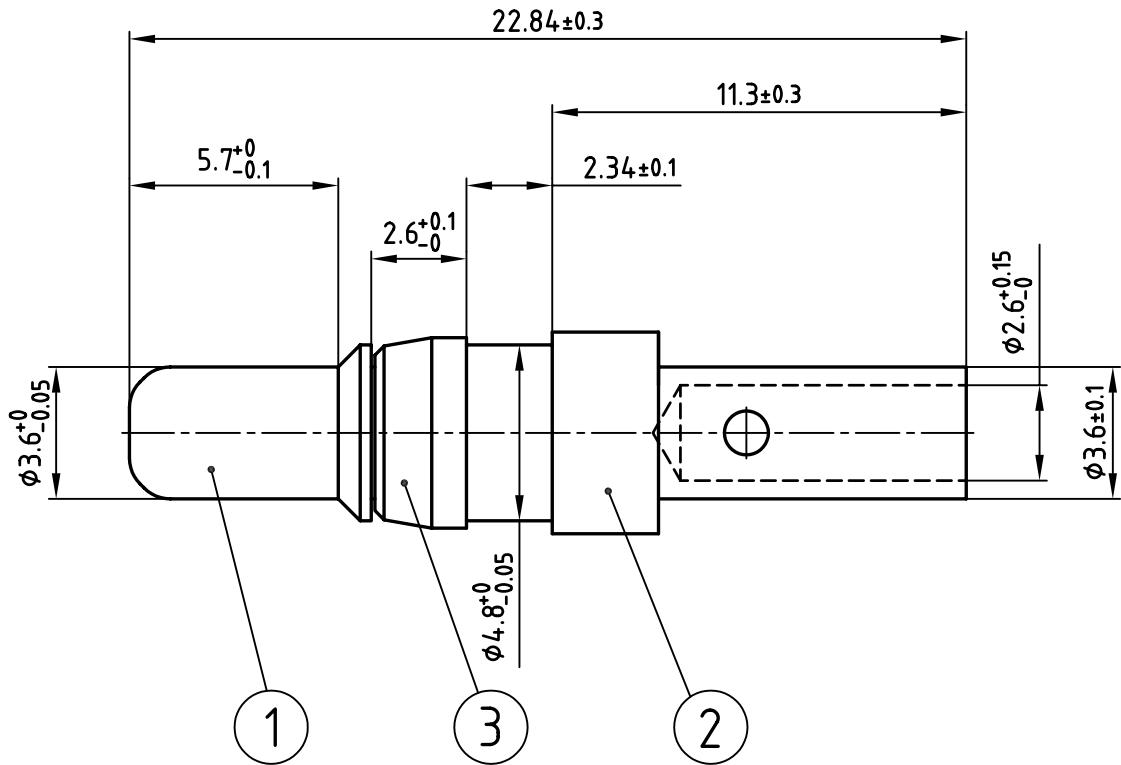


used for: D-SUB COMBINATION



NOTES:

1. MATERIAL: COPPER ALLOY
2. PLATING:
 ITEM 1: min. 30µ" HARD GOLD OVER min. 50µ" NICKEL
 ITEM 2: min. 8µ" HARD GOLD OVER min. 50µ" NICKEL
 ITEM 3: NICKEL PLATED



THIS DRAWING MAY NOT BE COPIED OR REPRODUCED IN ANY WAY, AND MAY NOT BE PASSED ON TO A THIRD PARTY WITHOUT WRITTEN PERMISSION.
 OWNERSHIP AND COPYRIGHT OF CONEC GmbH
 DO NOT ALTER CAD DRAWING BY HAND

1998	date	name	
drawn	23.03.	Barcinski	
appd.	23.03.	Mickenbecker	
norm			
d-old			
rev.	description	date	name



tolerance	scale: 5:1
	material: SEE NOTES
title: HIGH POWER CONTACT MALE CRIMP VERSION 20A D-SUB COMBINATION	
dwg no: 13K11D2A	AutoCAD/REL.13 DIN-A 4
part no: 131C11029X	sh: 1/1